

High TB burden | High HIV burden |

Population 2010 (millions) 41

| Estimates of burden * 2010 | Number (thousands) | Rate (per 100 000 pop) |
|-------------------------------|--------------------|------------------------|
| Mortality (excluding HIV) | 69 (4.9–9.4) | 17 (12–23) |
| Prevalence (incl HIV) | 110 (49–180) | 283 (122–448) |
| Incidence (incl HIV) | 120 (120–130) | 298 (286–311) |
| Incidence (HIV-positive) | 50 (45–55) | 122 (110–135) |
| Case detection, all forms (%) | 82 (79–86) | |

Case notifications 2010

| New cases | (%) | Retreatment cases | (%) |
|----------------------------|---------------|--------------------------|---------------|
| Smear-positive | 36 260 (38) | Relapse | 3 668 (35) |
| Smear-negative | 31 842 (33) | Treatment after failure | 245 (2) |
| Smear unknown | 10 120 (11) | Treatment after default | 1 502 (14) |
| Extrapulmonary | 17 382 (18) | Other | 5 064 (48) |
| Other | 0 (0) | | |
| Total new | 95 604 | Total retreatment | 10 479 |
| Total < 15 years | 5 721 | | |

| | | |
|-----------------------|---------|----------------|
| Total new and relapse | 99 272 | (94% of total) |
| Total cases notified | 106 083 | |

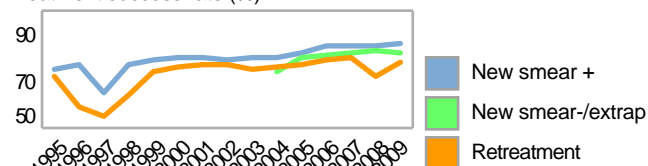
Drug regimens

| | |
|---|-----|
| Rifampicin used throughout treatment | Yes |
| % of patients treated with fixed-dose combinations (FDCs) | 100 |
| Paediatric formulations procured | Yes |

Treatment success rate 2009 (%)

| | |
|-----------------------------------|----|
| New smear-positive | 86 |
| New smear-negative/extrapulmonary | 82 |
| Retreatment | 78 |

Treatment success rate (%)



MDR-TB, Estimates among notified cases *

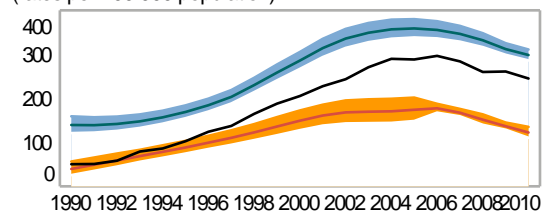
| | |
|--|----------------|
| % of new TB cases with MDR-TB | 0.0 (0.0–0.70) |
| % of retreatment TB cases with MDR-TB | 0.0 (0.0–6.3) |
| Estimated MDR-TB cases among new pulmonary TB cases notified in 2010 | 0 (0–550) |
| Estimated MDR-TB cases among retreated pulmonary TB cases notified in 2010 | 0 (0–660) |

| MDR-TB reported cases 2010 | New | Retreat-ment | Total |
|-----------------------------------|-----|--------------|-------|
| Cases tested for MDR-TB | | 706 | 817 |
| % of notified tested for MDR-TB | | 7 | <1 |
| Confirmed cases of MDR-TB | | 103 | 112 |
| MDR-TB patients started treatment | | | 118 |

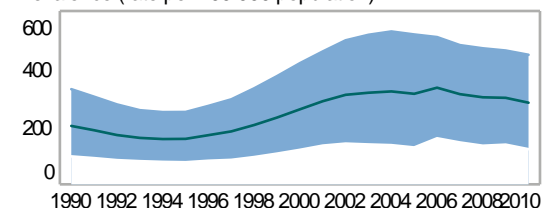
| Laboratories | 2009 | 2010 | 2011 |
|------------------------------------|------|------|------|
| Smear (per 100 000 population) | 30 | 33 | 32 |
| Culture (per 5 million population) | 0.8 | 0.7 | 0.7 |
| DST (per 10 million population) | 0.5 | 0.5 | 0.6 |

| | |
|-------------------------------|-----------------|
| Second-line DST available | Outside country |
| National Reference Laboratory | Yes |

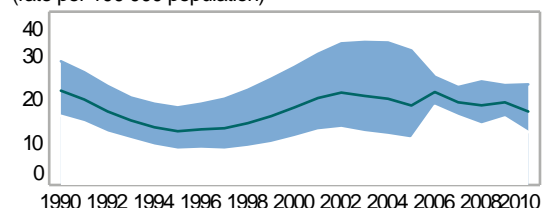
Incidence (HIV+TB in orange), notifications (black) (rates per 100 000 population)



Prevalence (rate per 100 000 population)



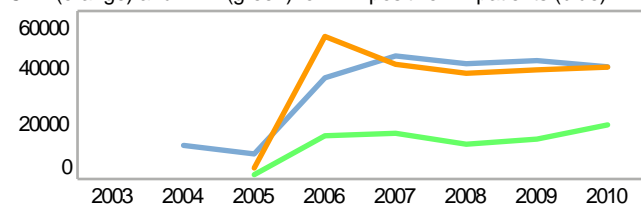
Mortality excluding HIV (rate per 100 000 population)



TB/HIV 2010

| | |
|---|--------|
| TB patients with known HIV status | 96 930 |
| % of TB patients with known HIV status | 91 |
| TB patients that are HIV-positive | 40 069 |
| % of tested TB patients that are HIV-positive | 41 |
| % HIV-positive TB patients started on CPT | 100 |
| % HIV-positive TB patients started on ART | 48 |
| HIV-positive people screened for TB | |
| HIV-positive people provided with IPT | |

CPT (orange) and ART (green) for HIV-positive TB patients (blue)



| Financing | 2011 | 2012 |
|---|------|------|
| Total budget (US\$ millions) | 59 | 53 |
| Available funding (US\$ millions) | 30 | 20 |
| % of budget funded | 51 | 38 |
| % available funding from domestic sources | 37 | 39 |
| % available funding from Global Fund | 49 | 59 |

NTP Budget (blue) and available funding (green) (US\$ millions)

